

## OUR CAPABILITIES

We control our critical processes:

- + Supply chain
- + Distribution
- + Product quality

We are vertically integrated—developing the majority of our products in-house and utilizing our dedicated development and regulatory affairs teams. As a result, we can maximize efficiency and provide a consistent supply of high-quality products at reasonable prices.



# Leepra®

Levetiracetam

- 250, 500 & 750mg Tablet
- SR Tablet 500/750/1000mg
- Oral Solution (100mg/ml)

Learn more about LEEPRA at  
[www.TAJPHARMAINDIA.com](http://www.TAJPHARMAINDIA.com)

Leepra® (Levetiracetam), is Registered Trademark of TAJ PHARMA GROUP, Mumbai, India.

Trademarks. All product names, whether or not appearing in large print or with the trademark symbol, are trademarks of TAJ PHARMACEUTICALS LIMITED, its affiliates, related companies or its licensors or joint venture partners, unless otherwise noted. The use or misuse of these trademarks or any other materials, except as permitted herein, is expressly prohibited and may be in violation of copyright law, trademark law, the law of slander and libel, the law of privacy and publicity, and communications regulations and statutes. Please be advised that Taj Pharma actively and aggressively enforces its intellectual property rights to the fullest extent of the law. Copyrights. The entire contents of this leaflet are subject to copyright protection.

Copyright © 2002-2018 TAJ PHARMA GROUP, MUMBAI



For more details for LEEPRA® you can contact us at our India Distribution Center  
TAJ PHARMA INDIA LTD. "Hyder Manzil", 15-6-109 Afzal Gunj, Hyderabad AP 500 012, India.

BOOK YOUR ORDER VIA TELEPHONE: 040 246 00 999 / 040 246 11 777.

E-mail: [shabbir@tajpharma.com](mailto:shabbir@tajpharma.com)

This Medication Guide / Product Formula's / Leaflet has been approved by the Indian Food and Drug Administration  
Revised: January 2018.

LEEPRA® TABLETS  
(Levetiracetam) for  
Epilepsy in children  
and adults

FOR INDIA & EXPORT.

INTRODUCING TO LEEPRA

An antiepileptic medicine treat  
seizures in epilepsy.

# Leepra®

Levetiracetam

- 250, 500 & 750mg Tablet
- SR Tablet 500/750/1000mg
- Oral Solution (100mg/ml)



WHEN EPILEPTIC SEIZURES / EFFECT THE BRAIN HEALTH  
Treating partial-onset, myoclonic,  
or generalized tonic-clonic seizures in patients with epilepsy.

**DON'T LET EPILEPSY ROB YOU OF YOUR TIME.**

Leepra® (Levetiracetam), is Registered Trademark of  
TAJ PHARMA GROUP, Mumbai, India.

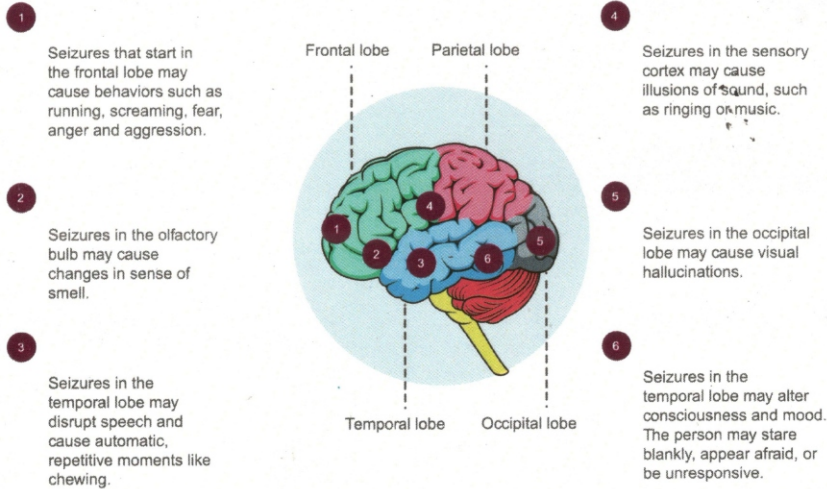


For Special Discounts Contact Us!  
See inside for details.



## What is LEEPRA? IMPORTANT SAFETY INFORMATION

### PARTIAL SEIZURES & REGIONS OF THE BRAIN



### What is LEEPRA and could it be right for me?

Controlling your partial-onset seizures may mean taking one or more antiepileptic medicines. LEEPRA® (levetiracetam) is a prescription medicine that can be used to treat partial-onset seizures in people 16 years of age and older with epilepsy. LEEPRA may be given in the vein (intravenously) when LEEPRA is not able to be taken by mouth. It is not known if LEEPRA is safe and effective in children younger than 16 years of age.

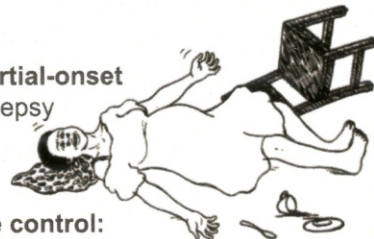
### LEEPRA may:



- **Reduce the number of partial-onset seizures** in adults with epilepsy



- **Provide additional seizure control:**
  - without having to give up the benefits of your current antiepileptic medicine(s)
  - even if you have tried or are taking multiple antiepileptic medicines



### Levetiracetam

LEEPRA® (levetiracetam) is indicated as monotherapy in the treatment of partial onset seizures with or without secondary generalisation in patients from 16 years of age with newly diagnosed epilepsy.

The daily dose is administered in two equally divided doses.

LEEPRA is indicated as adjunctive therapy in the treatment of partial onset seizures with or without secondary generalisation in adults, children and infants from 1 month of age with epilepsy. (The concentrate for solution for infusion: is indicated for adults, adolescents and children from 4 years of age).

in the treatment of myoclonic seizures in adults and adolescents from 12 years of age with Juvenile Myoclonic Epilepsy

in the treatment of primary generalised tonic-clonic seizures in adults and adolescents from 12 years of age with Idiopathic Generalised Epilepsy.

### Oral solution

The oral solution may be diluted in a glass of water and may be taken with or without food. A graduated oral syringe, an adaptor for the syringe and instructions for use in the package leaflet are provided with LEEPRA.

### Concentrate for solution for infusion

LEEPRA concentrate is an alternative for patients when oral administration is temporarily not feasible.

### LEEPRA 250 mg film-coated tablets - Patient information leaflet

For other products

LEEPRA 500 mg film-coated-tablets

LEEPRA 750 mg film-coated-tablets

LEEPRA 1000 mg film-coated tablets

LEEPRA 100 mg/ml, oral solution

LEEPRA 100 mg/ml concentrate for solution for infusion

**Leeptra**  
Levetiracetam

### Taking LEEPRA



- Your doctor will tell you how much LEEPRA to take and when to take it. You start with the full recommended dose from day one. LEEPRA does not require titration – this means that you do not need to increase your dose over several weeks. See next page for complete information on taking LEEPRA.

LEEPRA may not be for everyone. You and your doctor should discuss the possible benefits and risks of treatment with LEEPRA.